

*Simply beautiful and beautifully simple*



***The FAIRHOLME***

**GOLDFINCH Mk. IV and CAPRICE Mk. I**





View to front of  
"GOLDFINCH" Mk. IV



View to rear of  
"GOLDFINCH" Mk. IV

## GOLDFINCH Mk. IV

The **Goldfinch** enters its fourth year in the forefront of top quality caravans with the Fairholme new internal decor of waxed beige panelled walls and furniture, Fiesta blue upholstery, copper shade curtains and crystal fawn deep-pile carpet, earning its place, as ever, among the "great 'vans."

### Study its special features:

Large attractive lounge which sub-divides into two bedrooms. The front section with its two wide single bed settees, chest of drawers with cocktail compartment, formica topped table, roof locker, etc., making a lovely sun lounge with the best dining and entertaining facilities. The centre section of the lounge provides the popular dressaway double settee bed (Fairholme patent No. 774310), a spacious wardrobe (the door of which forms part of the night-time partition), a chest of deep spacious drawers, and a very attractive mirror roof locker.

The lounge is divided from the end kitchen with the popular and attractive curved arch which incorporates a serving counter.

A practical kitchen with Junior General Cooker, sink and drainer, fitted crockery unit, formica topped work table with plenty of good storage space in cabinets below. A gas cylinder compartment is provided and a tank and pump fitted on request.

A self contained and spacious toilet compartment.

Exterior efficiently and attractively painted in pearl grey and summer blue.

### You can't miss with this . . .

Much of the value of a Fairholme cannot be seen on the surface. The experience of large production over many years. The quality of all materials rust proofed screws, brass hinges, heavy-gauge aluminium, high efficiency in long-life paint, durable polish, the use of heat resisting materials for work of doors, the clean finished nature of the inside of the cabinets, the care to very name respected in all spheres. The towing qualities have been loudly acclaimed thousands of Fairholme owners repeatedly vouch for the support the com be understood and appreciated in the Fairholme motto

**"Trifles make perfection 1**



## and CAPRICE Mk. I

The CAPRICE in its 6' 6" width is introduced for those who seek the popular features of the Goldfinch in a smaller and lesser priced model. Suitable in size for all continental touring it answers the appeal of those who wish to tour far and fast with minimum of worry.

The Goldfinch lounge is maintained in general but with the Dressaway double settee butting up to the kitchen unit by night. By day the settee reduces to provide standing space at the sink and work table. This model is fitted with a B. & B. hotplate with a grill and two rings but the design provides for a Junior General if required. All working surfaces are formica covered, the cylinder cupboard is provided and a tank and pump can be fitted on request. The internal and external decor as detailed for the Goldfinch also applies to this model.

	" Goldfinch "	" Caprice "
Length without tow-bar ..	16' 5"	14' 6"
Length overall with tow-bar ..	19' 2"	16' 9"
Body width overall ..	7' 1"	6' 6"
Height overall ..	8' 7½"	8' 6"
Tow-hitch height ..	1' 7½"	1' 7"
Ex Works weight ..	19½ cwt.	16½ cwt.
Weight on Tow-bar ..	85 lbs.	85 lbs.
Insulation ..	Alfol.	Alfol.
Windows ..	8 (20" deep)	8 (20" deep)
Tyre size (Dunlop) ..	6.00 x 16 Tubeless	5.50 x 16 Tubeless
Wheels ..	Code 551-4.50 x 16 (5 stud)	Code 551-4.50 x 16 (5 stud)

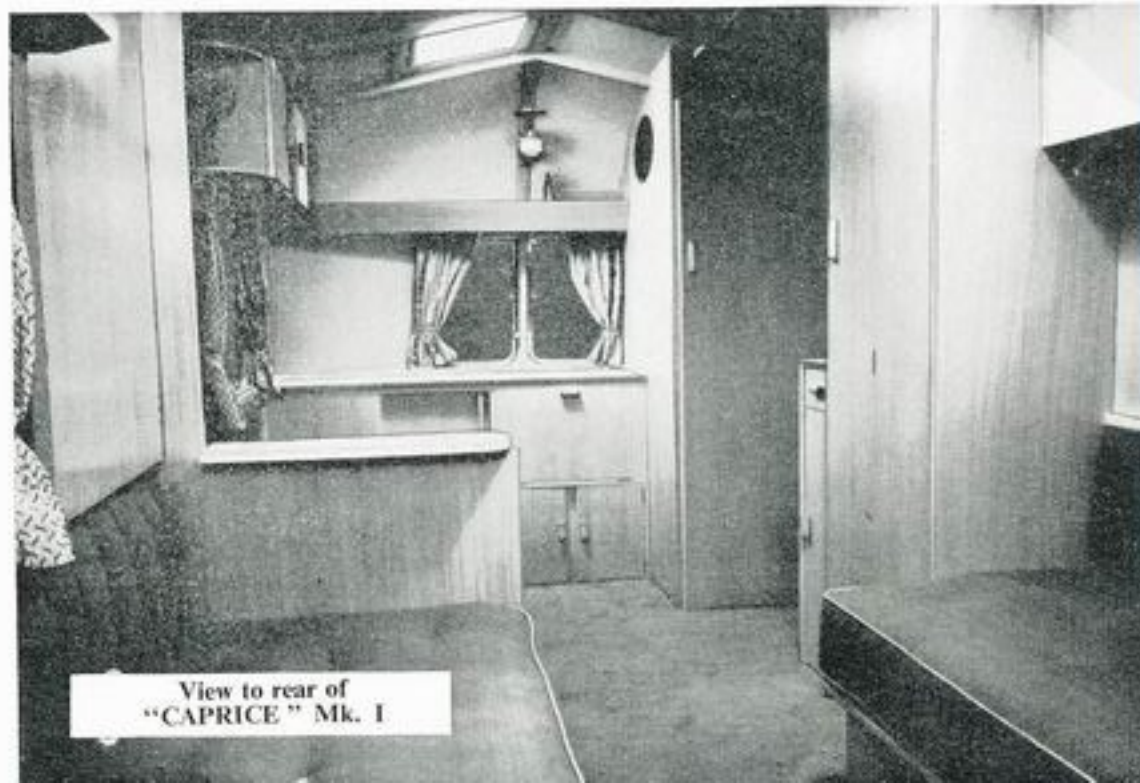
Road lights — 2 front white, 2 stop/Tail/Reflectors, 2 number plates.  
Boden Chassis with 8" brakes and tow-bar encased with aluminium and fitted with B. & B. Hitch with telescopic jockey wheel.

many points of consideration and the attention to detail comes from the selection of the best veneers and timbers, the generous use of bolts, gluing, the screwing and gluing of all frames, the oversized undergear, the surfaces, the deep pile expensive carpet and underfelt, the double panelling — all these constitute the perfection which has made Fairholme a name known by caravan and motor magazines following exhaustive tests and the many compliments always gives in its after sale's care of a Fairholme owner. It can

but perfection is no trifle"

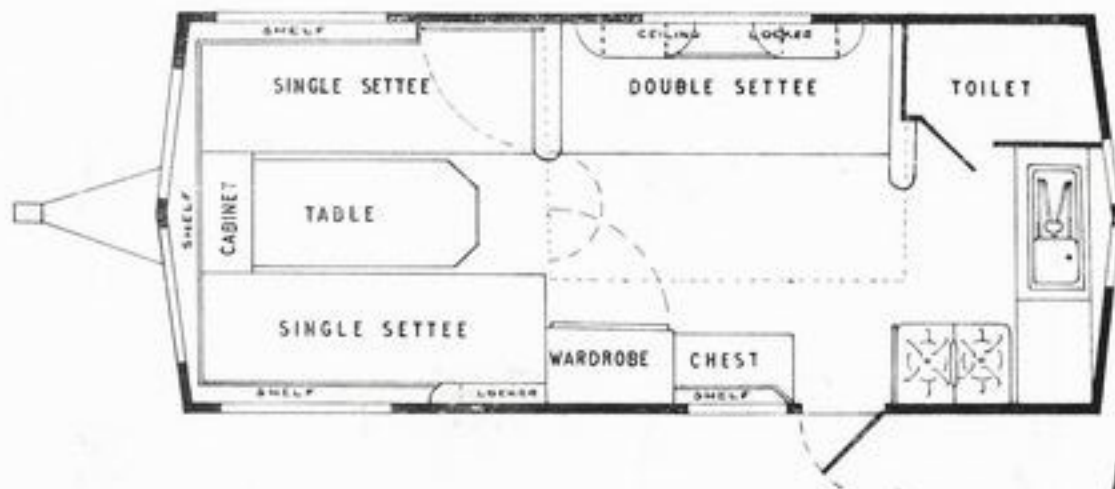


View to front of  
"CAPRICE" Mk. I

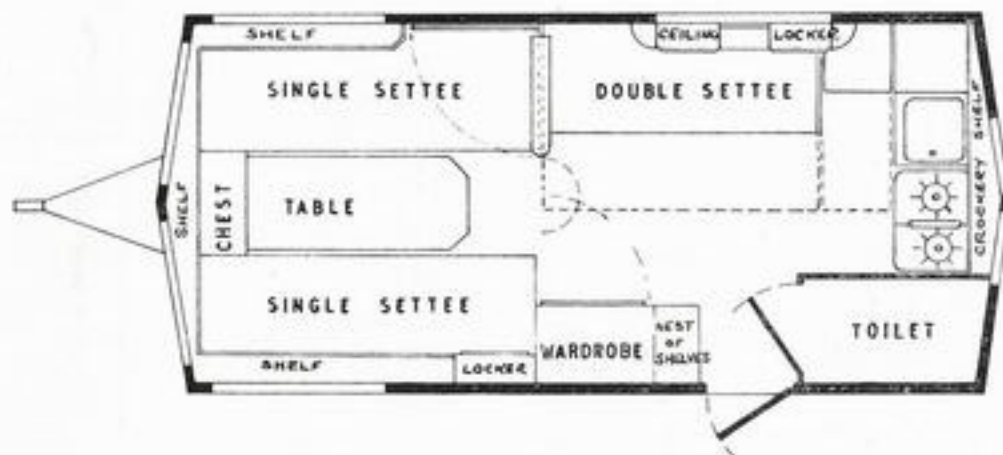


View to rear of  
"CAPRICE" Mk. I

## THE GOLDFINCH



## THE CAPRICE



# FAIRHOLME PRODUCTS LTD.

COLCHESTER ESTATE

COLCHESTER AVENUE

CARDIFF

TELEPHONE CARDIFF 45535-6-7

### The sign of approval



*The abridged descriptions in this catalogue are given for the guidance of intending purchasers. The Company does not, however, bind itself to the exact details specified or illustrated and reserves the right to alter any part of the caravan as may be considered advantageous. Rugs, ornaments, and other such decorations shown in the illustrations are for display purposes only and do not form part of the standard equipment.*

*Sales are conditional upon the terms of our Warranty, a copy of which can be obtained from us on request.*

Qualitex Printing Limited, West Canal Wharf, Cardiff.

The nearest stockist to your address is:

DISTRIBUTORS  
**KEN STEPHENS**  
**CARAVANS LTD.**  
**CHELTENHAM RD. EAST**  
**GLOUCESTER**  
**CHURCHDOWN 3311/2**

who will be pleased to demonstrate to you