

Caravanning

VANROYCE



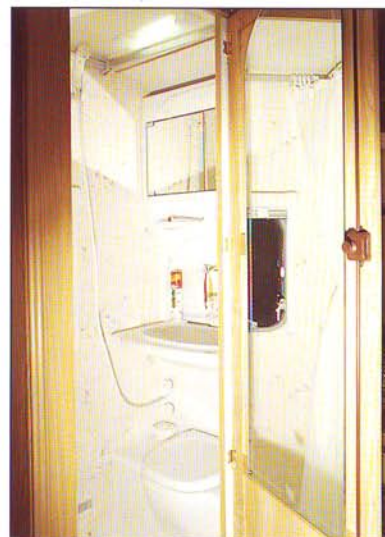
Tour de Force

Landseer

- Fully galvanised Alko chassis and Euroaxle
- Telescopic jockey wheel
- Skid bracket under A-frame
- Constructed to the high standards of Vanroyce
- Fully weather protected underfloor
- Aerodynamic design
- One piece aluminium roof
- Fibreglass front panel
- Gas bottle locker
- Fibreglass rear panel
- Finished in Vanroyce glaze with rich burgundy trim
- Exterior access battery locked with dedicated terminals
- Moulded wheel arches and side skirts
- Stainless steel grab handles
- Polyplastics fully double glazed windows
- Awning and skirt rail
- Stable door with window
- Awning light
- Single key operation to exterior locks
- E.P.P. electrical system
- Honey coloured electrical switches and sockets
- Sumptuous soft furnishings
- Wood edged oak finished tops in lounge area
- Freestanding table
- Roof light with flyscreen and blind in living area
- Easy glide pull-out slats for main bed make-up
- All furniture screwed together
- Storage baskets
- Mudflaps
- Fully fitted washroom with shower tray, washbasin, cabinet and thetford manual cassette portapotti
- Full length shower curtain with remaining clip
- 25 metre mains lead
- Smoke alarm
- Full length mirror
- Semi-rigid plumbing system with colour coded pipes
- Whale mixer taps
- 4 burner vitreous enamel hob/grill with flame failure device
- Built-in glass fronted oven
- Stylish glass hob cover
- Combined sink and drainer
- Wood edged formica kitchen worktops with matching sink flaps
- Electrolux RM4237 refridgerator
- Crockery rack and cutlery tray
- Independent gas isolator taps
- Comfort 3 heating management system with immersion heater
- 12V strip lighting
- Elegant mains lighting
- Brass reading lights
- Stainsafe carpet
- Flyscreens and blinds on all windows
- Stylish wheel trims
- All windows etched with C.R.I.S. number
- Reversing lights
- Rear fog lights
- High level brake light
- Clock
- Cocktail cabinet with etched tumblers and bottle holder
- Solid ash framed furniture doors
- Whale submersible pump
- Spare wheel



The Landseer 400 Interior; typical Vanroyce luxury



The Landseer 400 Washroom



The Landseer 400 Kitchen



The Control Panel is conveniently located by the door

Weight Specifications

Maximum Authorised Weight (M.A.W.)	Ex Works Weight (E.W.)	Caravan Allowable Payload (C.A.P.)
1050 kg 20.6 cwt	840 kg 16.5 cwt	210 kg 4.1 cwt

External Specifications

Shipping Length	External Length	External Width	External Height	Awning Size
5.94 m 19'5"	5.04 m 16'5"	2.11 m 7'0"	2.51 m 8'3"	8.25 m

Internal Specifications

Internal Length	Internal Width	Internal Height	Bed Sizes
4.19 m 13'9"	2.00 m 6'6"	1.95 m 6'4 1/2"	(2) 6'3" x 2'3" or (1) 6'4" x 4'9"

Tyre Specifications

Tyre Size	Recommended Tyre Pressures @ 81 M.P.H.
175 R13C 6 PLY	3.7 BAR 54 PSI

Weight Specifications

Maximum Authorised Weight (M.A.W.)	Ex Works Weight (E.W.)	Caravan Allowable Payload (C.A.P.)
1100 kg 21.6 cwt	865 kg 16.9 cwt	235 kg 4.7 cwt

External Specifications

Shipping Length	External Length	External Width	External Height	Awning Size
6.25 m 20'5"	5.35 m 17'5"	2.11 m 7'0"	2.51 m 8'3"	8.52 m

Internal Specifications

Internal Length	Internal Width	Internal Height	Bed Sizes
4.50 m 14'9"	2.00 m 6'6"	1.95 m 6'4 1/2"	(2) 6'3" x 2'3" or (1) 6'4" x 4'9"

Tyre Specifications

Tyre Size	Recommended Tyre Pressures @ 81 M.P.H.
175 R13C 6 PLY	3.7 BAR 54 PSI

Weight Specifications

Maximum Authorised Weight (M.A.W.)	Ex Works Weight (E.W.)	Caravan Allowable Payload (C.A.P.)
1200 kg 23.6 cwt	919 kg 18.0 cwt	281 kg 5.6 cwt

External Specifications

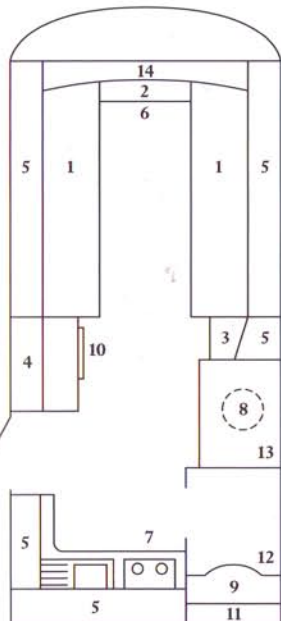
Shipping Length	External Length	External Width	External Height	Awning Size
6.93 m 22'8"	6.03 m 19'8"	2.11 m 7'0"	2.51 m 8'3"	9.2 m

Internal Specifications

Internal Length	Internal Width	Internal Height	Bed Sizes
5.18 m 17'0"	2.00 m 6'6"	1.95 m 6'4 1/2"	(2) 6'3" x 2'3" or (1) 6'4" x 4'9" plus (2) 6'0" x 2'2"

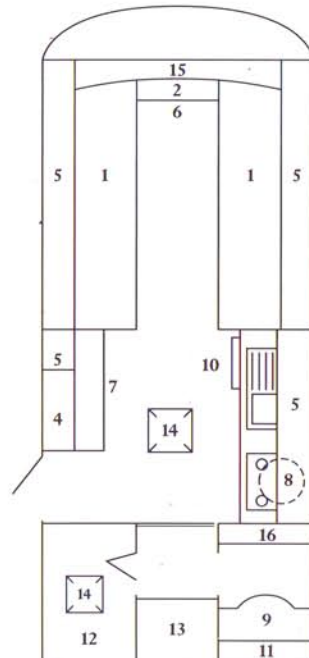
Tyre Specifications

Tyre Size	Recommended Tyre Pressures @ 81 M.P.H.
185 R13C 6 PLY	3.7 BAR 54 PSI



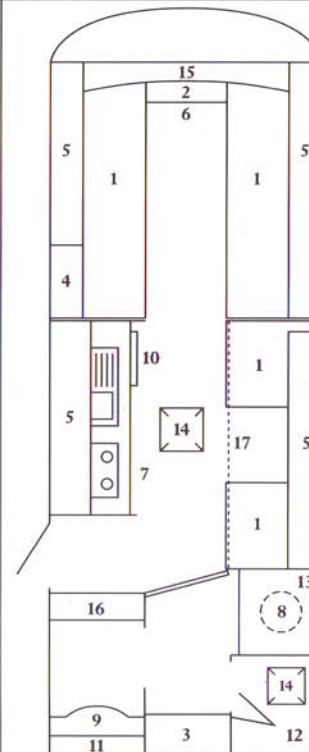
1. Bed
2. Bed Slats
3. Cupboard
4. Cocktail Cabinet
5. Locker
6. Removable Cabinet
7. Oven
8. Heater / Boiler
9. Cassette Toilet
10. Electronic Fridge
11. Tip-up Basin & Cabinet
12. Shower Tray
13. Wardrobe
14. Shelf

400



1. Bed
2. Bed Slats
3. Cupboard
4. Cocktail Cabinet
5. Locker
6. Removable Cabinet
7. Oven
8. Heater / Boiler
9. Cassette Toilet
10. Electronic Fridge
11. Tip-up Basin & Cabinet
12. Shower Tray
13. Wardrobe
14. Rooflight
15. Shelf
16. Table Storage

450



1. Bed
2. Bed Slats
3. Cupboard
4. Cocktail Cabinet
5. Locker
6. Removable Cabinet
7. Oven
8. Heater / Boiler
9. Cassette Toilet
10. Electronic Fridge
11. Tip-up Basin & Cabinet
12. Shower Tray
13. Wardrobe
14. Rooflight
15. Shelf
16. Table Storage
17. Fold-Away Bunk

520

NOTE: All dimensions are approximate overall sizes.

Illustrations, photographs, descriptions, information statements contained in the company's brochure and literature are intended as a guide only and do not form any part of any contract, nor do the same constitute any representation by or on behalf of the company. The company reserves the right to make amendments to the specifications shown in the course of development.



Vanroyce Limited
Gillibrands Road
Skelmersdale
WN8 9TR

Telephone 0695 51414
Facsimile 0695 556446

The Vanroyce Owners Club

Mrs Shirley Russell
Secretary
17 High Cloister
Billericay
Essex
CM11 2AW

Telephone 0277 622486

