




---



---

## *Important*

---



---

*The issue of this folder does not constitute an offer, and sales are conditional upon terms of business and express warranty issued by the makers of the caravans, a copy of which can be obtained by request. THOMSON'S caravans may not be publicly displayed or exhibited, nor may they be entered for any competitive event, without the prior sanction in writing of the makers.*

*Standard equipment includes carpet, crockery, mattress and curtains, but gas cylinder, refrigerator, toilet unit are not supplied. Although the manufacturers make every reasonable effort to conform to the specifications herein contained, they reserve the right to alter them as necessary.*

*Manufactured in Sweden's largest caravan factory with the benefit of nearly 50 years' specialised experience.*

*Sold and serviced by recognised agents and dealers throughout the British Isles and the Continent.*

*See these attractive caravans at:*



*Made in Scotland by*

**THOMSONS (CARRON) LIMITED**

Caravan Manufacturers approved by National Caravan Council

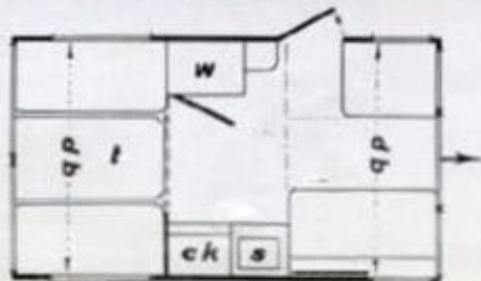
**CARRON · FALKIRK · SCOTLAND**

Telephone: LARBERT 315-714

## The Glendale Mk. V

11' 6" 4-berth

Probably the one British caravan most in demand in the export market. It's not surprising when you see the compact and well-made exterior which contains so much with so little weight—beds for four, two apartments, spacious wardrobe, cupboards and gas lighting and cooking.



(Shown right)

Double dinette forward with kitchen installation comprising sink and draining board with gas hotplate—all contained within cabinets giving generous storage space beneath. Part of rear dinette in foreground.

Doors of wardrobe behind doorway form partition to divide interior into roomy apartments. Double bed dinette in rear makes practical day time dining space or leisure space for children or adults. Roomy lockers at eye level and in kitchen unit and below seat cushions offer ample storage for equipment.

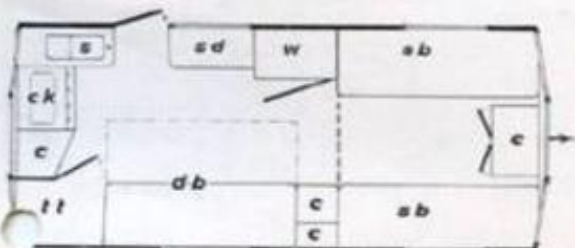
PRICE (at works) £290



## The Gleneagle Mk. V

16' 6" 4-berth

For those whose cars can tow a heavy caravan, surely the Gleneagle must appeal—yet, here is comfort and space and a sturdy construction and docility all in just over a ton. Consider the skill of planning—wardrobe, kitchen and toilet all in the rear, well away from the younger occupants who need the rest which the single beds provide.



A large settee double bed is the main feature of the rear apartment with the kitchen unit cleverly installed across the caravan to provide maximum space for the proud caravaneer to indulge her skill. Gas cooker with oven grill and two boiling rings, combined sink and draining board and even a water pump—all standard features of this model.

The single beds are situated at the front of the Gleneagle separated by a roomy locker which provides a mounting for the dining table. In line with its smaller relations, the Gleneagle can be divided into two separate apartments, with the advantage of even greater storage and shelf space within its larger size.

PRICE (at works) £460

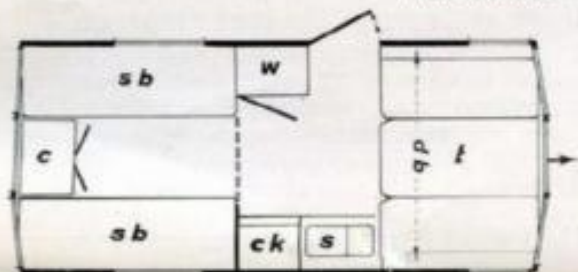


## The Glenalmond Mk. III

14' 6" 4-berth (Illustrated on front page)

In the middle price range there are few caravans to equal the Glenalmond. Designed specifically for towing with 1500 c.c. cars, it embodies all the skill and experience gained in past years through the construction of its famous ancestors. For those who favour an interior toilet arrangement, there is the Mk. IV version, but for maximum floor space, yet permitting beds of near domestic proportions, the Glenalmond is difficult to fault. The kitchen arrangement is planned to give maximum ease in operation and all discerning housewives will be thrilled with the gleaming perspex sink and draining board, so easily concealed within its cabinet. The gas hot-plate alongside will provide ample scope for satisfying the healthy appetites created by caravan life. The man of the house will be content at the docile manner with which the Glenalmond follows his car and where conditions permit, at home or in Europe, he can be sure of a smooth straight drive matching the performance of his modern car at the high speeds permissible on these new motorways.

PRICE (at works) £350



First impressions will immediately convey the spacious layout of the interior—to be confirmed time and again by further experience—the comfort of the four seat dinette which converts to a double bed at night, the attraction of the unusual window arrangement giving excellent "All-round viewability", the practical arrangement of the kitchen installation and the roominess of the wardrobe—all seen in the illustration on right.

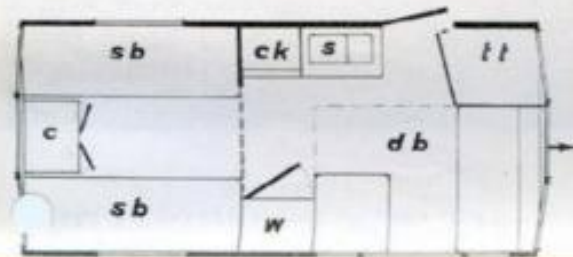
In the rear apartment, two single beds large enough for adults, enclose a useful locker below the rear windows. When guests arrive, the dining table is fixed to the front of this locker and space to seat six is there. Open the top of the locker and milady has the basis of her dressing table. Lockers at eye-level abound, there are shelves all round and the door of the wardrobe opens across the caravan making two roomy apartments at night.



## The Glenalmond Mk. IV

14' 6" 4-berth

For long sunny holidays, weekends, or as an annexe to your home, the Glenalmond IV offers new standards of comfort with a self-contained toilet apartment.



Look to the right—see the compact kitchen of the Glenalmond, crockery cupboards, cutlery drawer, gas cylinder stowage, ventilated larder surmounted by gas hotplate and plastics sink and draining board. At a touch all disappears to resume the presence of an elegant sideboard.

The toilet apartment situated immediately forward of the doorway is well lit and ventilated by its own window and roof light. A three-quarter dinette opposite the doorway with its three panel side window is ideal for relaxing and dining in during daytime, and with only slight alteration offers a comfy double bed at night. Note how the doorway has been positioned to allow its use without disturbing those occupying the rear portion.

PRICE (at works) £365



# The Glenrosa Mk. III

18' 6" length

Whether on tow or on site there's a new understanding of mobility and comfort to be found in the Glenrosa. Graceful outside, spacious inside, a new enjoyment can be yours with a Glenrosa.

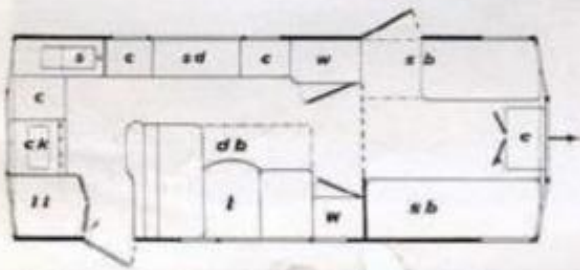


The illustration right gives an idea of the appointment of this largest THOMSON motor.

Two wardrobes—one fitted with drawers, sideboard and display or cocktail cabinets, three quarter dinette in the centre—all planned for maximum comfort and convenience, yet all the essentials are there, too. Principally a four berth, there's facilities to entertain or relax in the grand manner.

On the domestic front there's equipment and space to encourage the most ambitious hostess. Oven type cooker, gleaming plastics working space and sink with water pump all separated entirely from the remainder of the Glenrosa by carefully positioned screens. Next the rear door, stable type, the self-contained toilet apartment is located in its secluded corner.

PRICE (at works) £595



KEY TO DIAGRAMS : s—sink and drains, c—cupboard, ck—cooker, d—chest of drawers, w—wardrobe, sb—single bed, sb—side board, t—table, tt—toilet, db—double bed.

## SPECIFICATION OF 1961 RANGE

Certain features are common to all models, e.g. all steel, full length chassis, the Glendale chassis being of angle section whereas all others are of channel section. All models are equipped with telescopic jockey wheel and all are fitted with corner brace-operated steady legs, overrun and park brake with 2" self-locking ball coupling. Full road lights, numberplate and flashing indicator are installed and, apart from the Glendale, provision is made in all models to accommodate the gas cylinder within the caravan. The outer panelling of aluminium and an insulating medium of 'Fibreglass' is common to all models.

**INTERIOR :** Lined with hardboard, matt enamel finished, apart from the Glendale and Gleneagle, which are panelled in plywood. Furniture, on timber frame, of oak-faced plywood, natural lacquer finish. Interior spring mattresses with cotton moquette or cotton tapestry covering according to model. Butane gas light fittings installed, full cooker with oven in Gleneagle and Glenrosa, 20-piece crockery set in each model.

**WINDOWS :** All opening windows with plated metal frames. Roof-ventilators of perspex set in metal surrounds.

**FLOOR :** All models tongued and grooved boards mounted on a timber subframe integral with chassis, covered with fitted carpeting.

	Glendale	Glendalwood III	Glendalwood IV	Gleneagle	Glenrosa
Overall Length	14'	16' 6"	16' 8"	19' 0"	21' 0"
Overall Width	6' 6"	6' 6"	6' 6"	7' 3"	7' 6"
Overall Height	7' 10"	8' 3"	8' 3"	8' 9"	8' 9"
Length of Body	11' 6"	14' 6"	14' 6"	16' 6"	18' 6"
Delivered Weight	12½ cwt.	16½ cwt.	16½ cwt.	20½ cwt.	24½ cwt.
Tyre Size	5.20 x 15	5.90 x 15	5.90 x 15	6.00 x 15	6.00 x 16 Truck